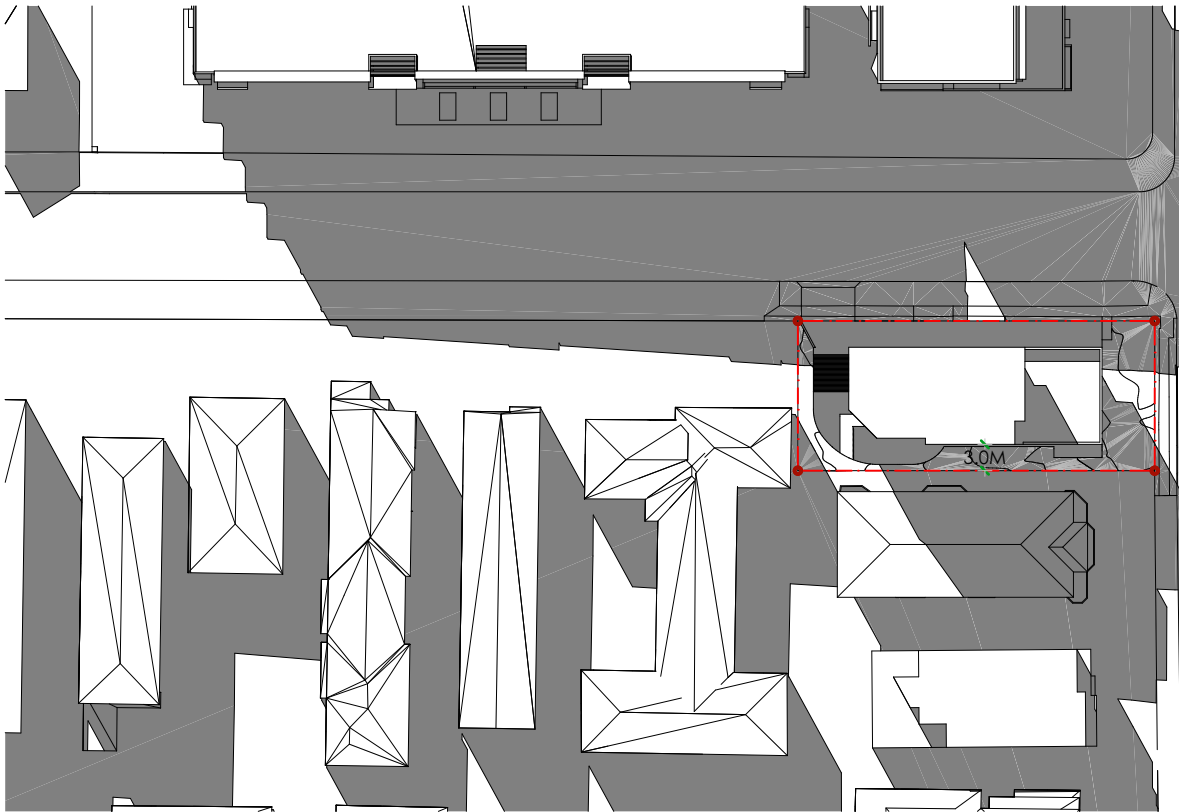
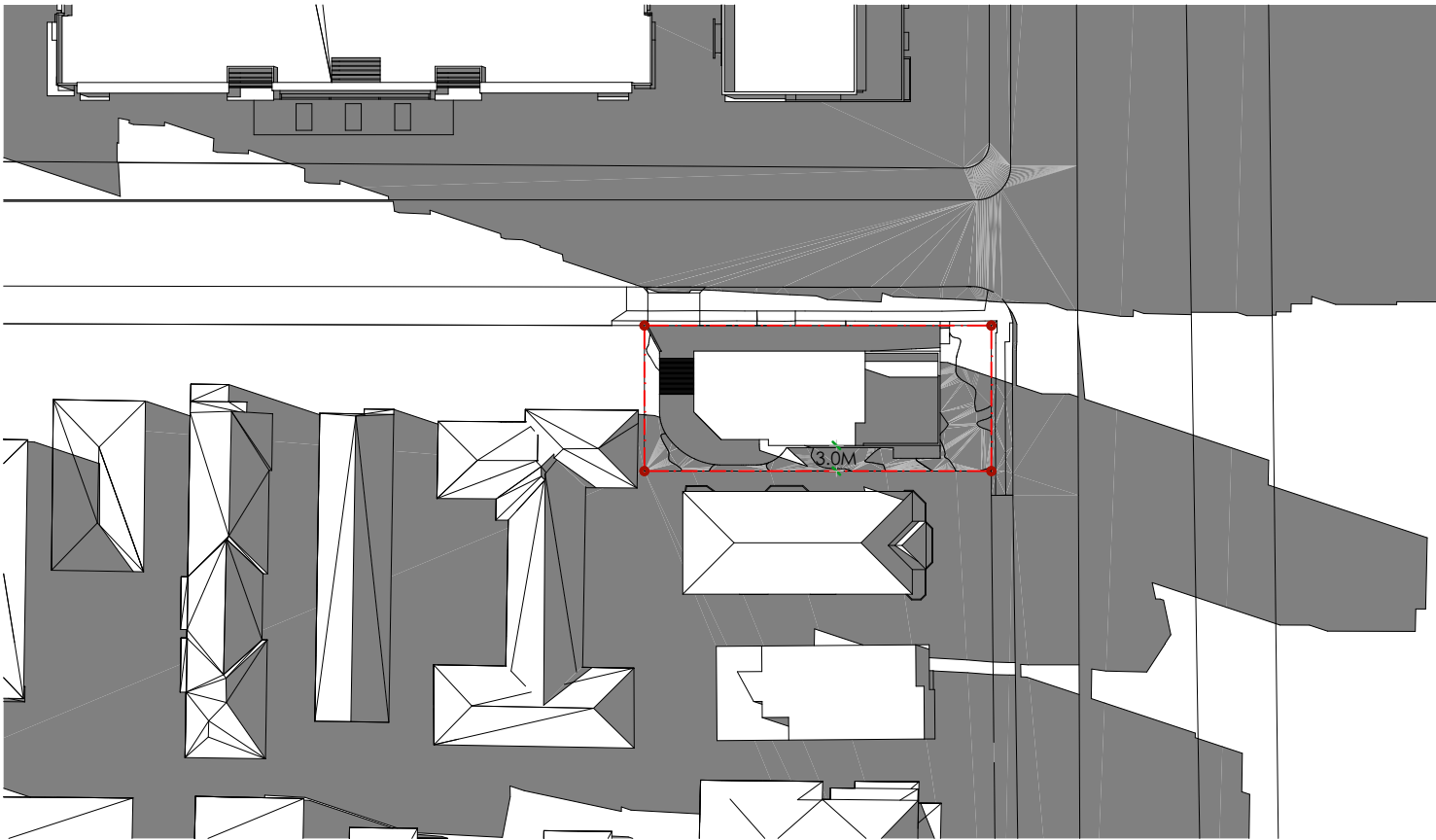


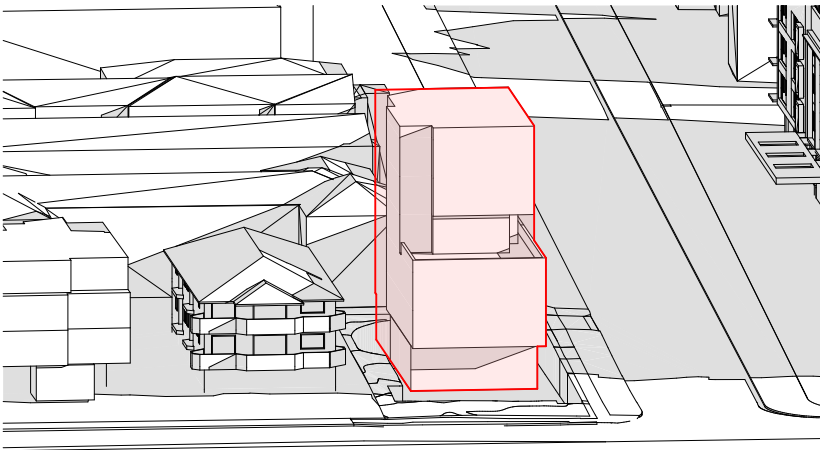
\$D6.11 BUILDING MASSING WITH ADG COMPLAINT SETBACK-SHADOW DIAGRAM - 9:00AM 21/06



\$D6.41 BUILDING MASSING WITH ADG COMPLAINT SETBACK-SHADOW DIAGRAM - 12:00PM 21/06



\$D6.71 BUILDING MASSING WITH ADG COMPLAINT SETBACK-SHADOW DIAGRAM - 3:00PM 21/06



BUILDING MASSING WITH ADG COMPLAINT SETBACK

Table 1 Minimum building separation increases proportionally to the building height

Building height	Separation distance
9 storeys and above	12-24m
Up to 8 storeys	9-18m
Up to 4 storeys	6-12m